



# FLAGSTONE PAVERS

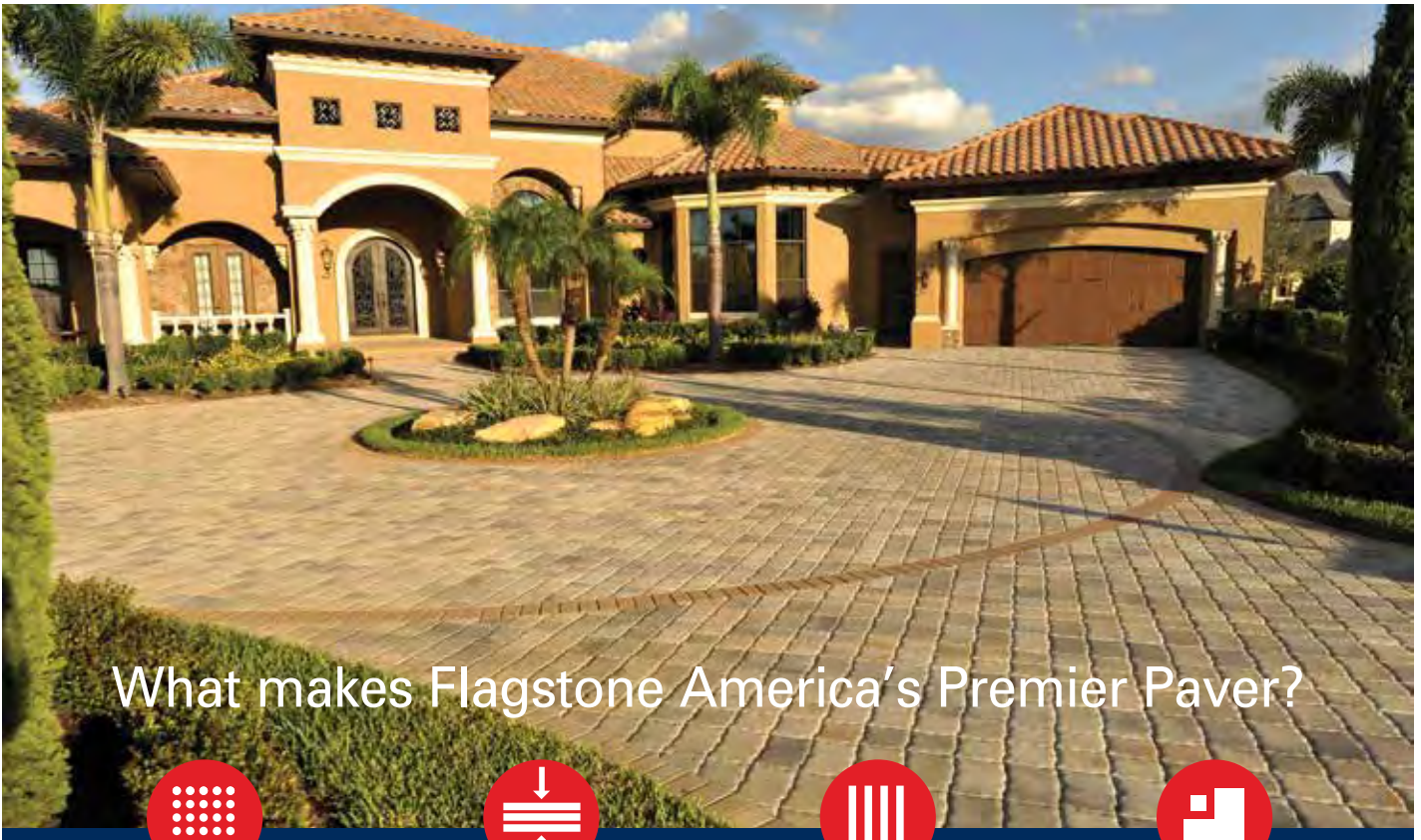
QUALITY & STRENGTH INTERLOCKED

[www.flagstonepavers.com](http://www.flagstonepavers.com)





# ABOUT US



## What makes Flagstone America's Premier Paver?



### MATERIAL

Flagstone Pavers meet or exceed the ASTM C-936, standard specifications for solid interlocking concrete paving units. We have the best multi-color blending system in the market today. Our innovative full-color through process, creates the strongest possible product, while maintaining a smooth concrete surface. So you get the best of both worlds. All with an unsurpassed warranty.



### DENSITY

Flagstone Pavers has developed a revolutionary color-through batch design that provides optimum strength and durability — without the problems often encountered in the veneer process offered by other manufacturers.

This innovative system eliminates separation between the surface and base material and stops premature wear.



### CONSISTENCY

Flagstone Pavers' renowned batch design continues to set the standard for the industry.

While other paver manufacturers may also use the color-through process, many do not add sand and properly adjust their cement and color loadings, which can result in the color looking faded compared to Flagstone's products.



### SERVICE

We are committed to providing outstanding service and exceptional on-time delivery.

With our architectural design guide, photo gallery, and sample boards, you'll find it easy to select the right paver solution for your project. And our comprehensive website puts all of our resources at your fingertips.

## FLAGSTONE PAVERS

QUALITY & STRENGTH INTERLOCKED

### Paving the way to your American dream...

Whether you're building or remodeling your dream home or pouring yourself into your business, you bring all your hopes and aspirations into it. You're fulfilling the American dream. At Flagstone, we put that same level of dedication and commitment into each one of our pavers. That's why they are simply the best paver you can buy.

Our revolutionary color-blending system gives you the most vibrant pavers available in the market today. We use only the finest quality materials available from Florida mines resulting in a paver with a smoother, harder surface providing enhanced durability and strength. Our commitment to outstanding service and exceptional on-time delivery truly separates us from the rest.



## TABLE OF CONTENTS

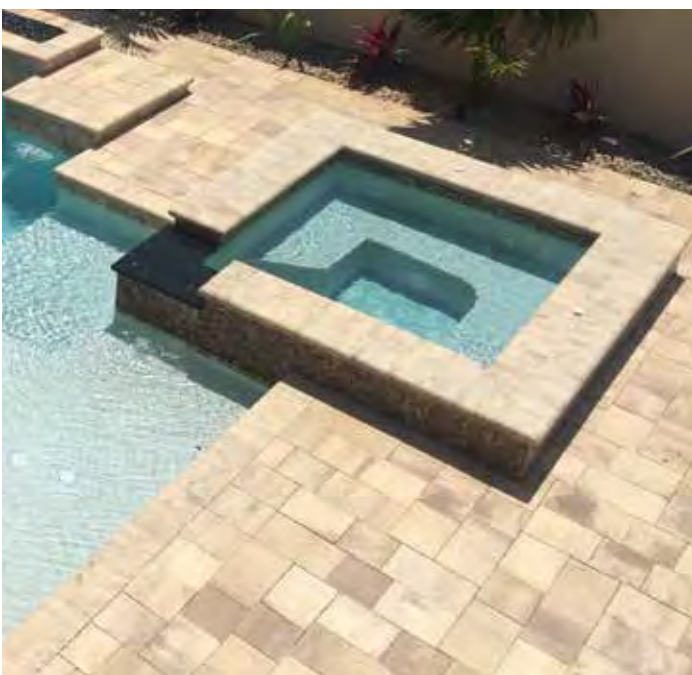
4	Gallery
6	Product Guide
7	Single Pavers
8	New England
8	Heritage
8	Patriot
9	Castlerock III
9	Traverstone
9	Eco-CityLock™
10	CityStone™ - Demi & Supra
11	Panorama™ - Demi & Supra
12	St. Augustine Collection
13	Coping
14	Rumbled Wall™
14	Munich Wall
14	Fire Pit Brick
15	RumbleStone®
16	Color Guide
19	Flagstone Color Matrix



# GALLERY



St. Augustine Collection: Castillo in White / Tan / Charcoal, Running Bond Pattern



Traverstone & Coping in Sandstone / Camel, Random Pattern



New England & Coping in Cream / Beige / Charcoal, Random Pattern



St. Augustine Collection in Cream / Beige / Charcoal



Patriot in Sand / Tan, T-Pattern



Frontier in Charcoal and Liberty in White / Pewter, Pattern 6



**PRODUCT  
GUIDE**

Old Glory in Cream / Beige / Charcoal, Running Bond Pattern

## SINGLE PAVERS



FRONTIER 4" x 4"  
Thickness: 30mm, 60mm



FREEDOM 4" x 8"  
Thickness: 30mm, 60mm, 80mm



INDEPENDENCE 8" x 12"  
Thickness: 60mm



COMMONWEALTH 8" x 8"  
Thickness: 30mm, 60mm



CAPITOL SINGLE 8.85" x 6.3"  
Thickness: 60mm



CAPITOL DOUBLE 8.85" x 8.85"  
Thickness: 30mm



OLD GLORY 12" x 18"  
Thickness: 60mm



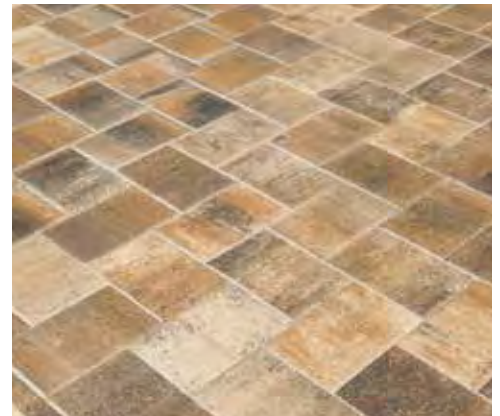
MONUMENT 11" x 8" x 4"  
Thickness: 30mm, 60mm



LIBERTY 12" x 12"  
Thickness: 30mm, 60mm



SUPREME 16" x 16"  
Thickness: 60mm



Independence in  
Cream / Beige / Charcoal,  
Herringbone Pattern



Supreme in Cream / Orange / Pewter,  
Running Bond Pattern



Monument White / Tan / Charcoal with  
Commonwealth Inserts in White and Tan



# PRODUCT GUIDE

## NEW ENGLAND



3" x 6"  
6" x 6"  
6" x 9"

**Thickness: 30mm, 60mm**



New England in Indian Summer, Running Bond

## HERITAGE



4½" x 8⅞"  
8⅞" x 8⅞"  
8⅞" x 13⅜"

**Thickness: 30mm, 60mm**

*Embossed surface gives a slate like appearance. Softened edges create the natural look of weathered flagstone.*



Heritage in White / Tan / Charcoal, Random Pattern

## PATRIOT



6¼" x 6¼"  
6¼" x 9⅜"

**Thickness: 30mm, 60mm**



Patriot in Cream / Beige / Charcoal, T-Pattern



## CASTLEROCK III



4<sup>5</sup>/<sub>8</sub>" x 6<sup>1</sup>/<sub>4</sub>"

6<sup>1</sup>/<sub>4</sub>" x 6<sup>1</sup>/<sub>4</sub>"

6<sup>1</sup>/<sub>4</sub>" x 9<sup>1</sup>/<sub>4</sub>"

**Thickness: 30mm, 60mm**

*Pillow top surface*



Castlerock III in Old Chicago, Random Pattern

## TRAVERSTONE



9" x 9"

9" x 12"

9" x 15"

**Thickness: 30mm, 60mm**

*Softened edges create the natural look of weathered flagstone.*



Traverstone in Cream / Orange / Pewter, Random Pattern

## ECO-CITYLOCK™



4" x 8"

**Thickness: 60mm**



Eco-CityLock in Gray / Charcoal, Herringbone Pattern



# PRODUCT GUIDE

## CITYSTONE™ - Demi



4" x 8"  
8" x 8"  
8" x 12"

**Thickness: 30mm, 60mm**



CityStone - Demi in Cream / Orange / Pewter, Random Pattern

## CITYSTONE™ - Supra



8" x 16"  
16" x 16"  
16" x 24"

**Thickness: 60mm**



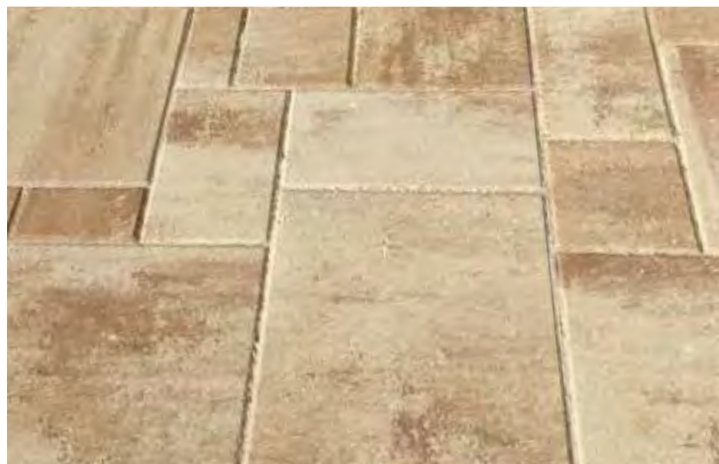
CityStone - Supra in White / Tan / Charcoal, Random Pattern

## CITYSTONE™ - Demi & Supra



4" x 8" | 8" x 16"  
8" x 8" | 16" x 16"  
8" x 12" | 16" x 24"

**Thickness: 60mm**



CityStone - Demi & Supra in Cream / Beige, Random Pattern

## PANORAMA™ - Demi



4" x 8"

8" x 8"

8" x 12"

**Thickness: 30mm, 60mm**

*Embossed surface gives a slate like appearance. Softened edges create the natural look of weathered flagstone.*



Panorama - Demi in Willow, Random Pattern

## PANORAMA™ - Supra



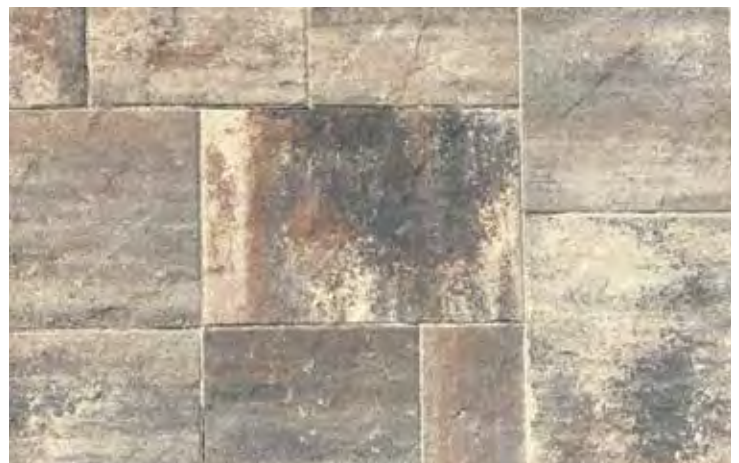
8" x 16"

16" x 16"

16" x 24"

**Thickness: 60mm**

*Embossed surface gives a slate like appearance. Softened edges create the natural look of weathered flagstone.*



Panorama - Supra in Willow, Random Pattern

## PANORAMA™ - Demi & Supra



4" x 8"

8" x 16"

8" x 8"

16" x 16"

8" x 12"

16" x 24"

**Thickness: 60mm**

*Embossed surface gives a slate like appearance. Softened edges create the natural look of weathered flagstone.*



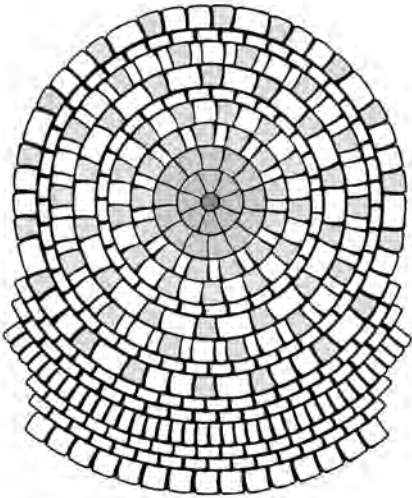
Panorama Demi & Supra in Cream / Beige, Random Pattern

## ST. AUGUSTINE COLLECTION

Flagstone Pavers' St. Augustine Collection is a compilation of paver shapes that can be used individually or combined to create a true "Old City" look and feel. The uneven chamfered edges and curvatures to the individual pavers appear as true stones.

Circles and fans are included in this unique collection and denote Old World craftsmanship. They become the center of attention in a field of pavers, adding warmth and charm. The St. Augustine collection consists of the following paver shapes:

- Flagler, 3<sup>1</sup>/<sub>8</sub>" x 6<sup>1</sup>/<sub>2</sub>"
- Anastasia, 6<sup>1</sup>/<sub>2</sub>" x 6<sup>1</sup>/<sub>2</sub>"
- Castillo, 6<sup>1</sup>/<sub>2</sub>" x 9<sup>7</sup>/<sub>8</sub>"
- Turret, 3<sup>1</sup>/<sub>8</sub>" Octagon
- Puente, 6<sup>1</sup>/<sub>2</sub>" x 7" x 2"
- Leones, 6<sup>1</sup>/<sub>2</sub>" x 7<sup>1</sup>/<sub>2</sub>" x 4<sup>3</sup>/<sub>8</sub>"
- Bahia, 3<sup>3</sup>/<sub>8</sub>" x 11"



Castillo in Cream / Beige / Charcoal



FLAGLER  
Thickness: 60mm



ANASTASIA  
Thickness: 60mm



CASTILLO  
Thickness: 60mm



TURRET OCTAGON  
Thickness: 60mm



PUENTE/LEONES  
Thickness: 60mm



BAHIA  
Thickness: 60mm



Fan Pattern in White / Tan / Charcoal,  
Surrounded with Anastasia in Cream / Orange / Brown



Circle Pattern in Cream / Orange / Pewter

## BULLNOSE COPING

Used for pool coping or step coping during new applications and replacement applications.

**Thickness: 60mm**



Castillo in Cream / Beige / Charcoal, 90 Degree Stack Pattern  
Bullnose Coping in Cream / Beige / Charcoal, Step Application

## REMODEL COPING

Remodel Coping can be used for pool coping or step coping to overlay existing hard surfaces.

**Available in 1" Long, 2 3/4" Long, 4" Long**

1" Long



2 3/4" Long



4" Long



2 3/4" Remodel Coping, Charcoal



4" Remodel Coping, Cream / Orange / Pewter



# PRODUCT GUIDE

## RUMBLLED WALL™



8" deep x 16" long x 4" thick  
Weight: 40 lbs

Rumbled™ Wall is a tumbled, modular wall product designed to bring Old World charm to your outdoor living spaces. Product can be dry stacked or mortar set to create many different looks. Popular configurations include seating walls, landscape walls, columns, planters, grill enclosures, stairs and fire pits.

## MUNICH WALL



8" deep x 12" long x 4" thick  
Weight: 25 lbs

Munich Wall offers an easy, cost-effective solution for smaller walls and columns. Product can be dry stacked or mortar set.

## FIRE PIT BRICK

8" deep x 7" - 5" wide x 4" thick  
Weight: 15 lbs



Rumbled Wall™, Munich Wall & Fire Pit Brick in Cream / Beige / Charcoal

## RUMBLESTONE®

Flagstone's innovative RumbleStone® provides a set of rustic building blocks for your outdoor hardscape projects. Simple to complex, large or small, the possibilities for creative expression are as far and wide as your imagination. The six tumbled RumbleStone® sizes modulate in all dimensions and can be assembled in a variety of configurations and orientations. In addition to simple running bond patterns, the stones can be easily stacked with insets, moved forward and backward, horizontally and vertically, for more aesthetically pleasing visual relief and texture. Also, the 3.5-inch base module works with common dimension lumber for benches and pergola posts. Stack 'em up and bond with construction adhesive.



RumbleStone® Bench and Fire pit in Café



RUMBLESTONE® SQUARE  
7" deep x 7" wide x 1 3/4" thick



RUMBLESTONE® MINI  
7" deep x 3 1/2" wide x 1 3/4" thick



RUMBLESTONE® RECTANGLE  
7" deep x 10 1/2" wide x 1 3/4" thick



RUMBLESTONE® LARGE  
7" deep x 10 1/2" wide x 3 1/2" thick



RUMBLESTONE® MEDIUM  
7" deep x 7" wide x 3 1/2" thick



RUMBLESTONE® TRAPEZOID  
7" deep x 10 1/4" - 6 1/2" wide x 3 1/2" thick



# COLOR GUIDE

## Blended White Cement Based Colors



Cream / Beige



Cream / Orange



Sand / Orange



Sand / Tan



Sandstone / Camel



Cream / Orange / Brown



White / Peach



White / Pewter



White / Tan



Cream / Beige / Charcoal



Cream / Orange / Pewter



Orange / Gold / Charcoal



Red / Yellow / Charcoal



White / Peach / Pewter



White / Tan / Charcoal



Old Chicago I



Old Chicago II



Willow

*Due to expected variations of the natural raw materials used in the production of these products, minor shade variations may occur between samples including material samples, photography, printed images, computer images and orders. Please make your color selections from the actual samples. Check with your Flagstone representative for shapes and sizes available in solid and premium colors.*



Blended Gray Cement Based Colors



Gray / Charcoal



Red / Charcoal



Red / Tan



Tan / Brown



Tan / Charcoal



Red / Tan / Charcoal



Orange / Tan / Brown



Orange / Tan / Charcoal



Indian Summer

Solid Gray Cement Based Colors



Brown



Charcoal



Gray



Pewter



Red



Tan

Due to expected variations of the natural raw materials used in the production of these products, minor shade variations may occur between samples including material samples, photography, printed images, computer images and orders. Please make your color selections from the actual samples. Check with your Flagstone representative for shapes and sizes available in solid and premium colors.



# COLOR GUIDE

## Solid White Cement Based Colors



## Premium Solid Colors



## Premium Blend Colors



Due to expected variations of the natural raw materials used in the production of these products, minor shade variations may occur between samples including material samples, photography, printed images, computer images and orders. Please make your color selections from the actual samples. Check with your Flagstone representative for shapes and sizes available in solid and premium colors.

# FLAGSTONE COLOR MATRIX

PAVER COLORS		White	Cream	Sand	Beige	Orange	White/Peach	White/Tan	White/Pewter	Cream/Beige	Cream/Orange	Sand/Tan	Sand/Orange	White/Tan/Charcoal	White/Peach/Pewter	Cream/Orange/Pewter	Cream/Beige/Charcoal	Orange/Gold/Charcoal	Red/Yellow/Charcoal	Cream/Orange/Brown	Old Chicago I	Old Chicago II	Willow	Sandstone/Camel	Gray/Charcoal	Red/Charcoal	Red/Tan	Tan/Brown	Tan/Charcoal	Red/Tan/Charcoal	Orange/Tan/Brown	Orange/Tan/Charcoal	Indian Summer	Tan	Pewter	Charcoal	Café			
		PAVERS																																						
SINGLE PAVERS	Frontier		X							X																										X				
	Freedom	X	X	X	X	X	X	X	X	X	X	X	X	X	X	X	X	X	X	X	X	X	X	X	X	X	X	X	X	X	X	X	X	X	X	X	X	X		
	Independence								0	0				0	0	0																					0			
	Commonwealth	X	X		X			X	0	X				X	X	X													0							0				
	Capitol									0						X	X													0										
	Old Glory	0	0					0	0	0		0	0	0	0	0	0																							
	Monument									X				X	X	X																								
	Liberty	0	0					X	X	X		0	X		X	X																								
	Supreme	0	0							0	0	0	0	0	0	0	0																							
New England							X	X	X		X	X	X	X	X	X		X	X	X	X	X	X	X	X		0	0	X	0	0	X								
Heritage							X	X	X		X	X	X	X	X	X		X	X	X	X	X	X	X	X				0	0	0	X								
Patriot							X	X	X		X	X	X	X	X	X		X	X	X	X	X	X	X			0	0	X	0	0	X								
Castlerock III							X	X	X		X	X	X	X	X	X		X	X	X	X	X	X	X				0	0	0	X									
Traverstone							X	X	X		X	X	X	X	X	X		X	X	X	X	X	X														X			
Eco-CityLock								X						X		X									X				X											
CityStone Demi & Supra#							X	X	X					X	X	X																								
Panorama Demi & Supra#							X	X	X					X	X	X																								
St. Augustine														0	0	0												0												
COPING																																								
Bullnose Coping		X	X	X	X	X	X	X	X		X	X	X	X	X	X		X	X	X	X	X	X	X	X			X						X	X	X	X			
Remodel Coping		X	X	X	X	X	X	X	X		X	X	X	X	X	X		X	X	X	X	X	X	X											X	X	X	X		
WALLS																																								
Rumbled™ Wall																X								X										X						
Munich Wall																X								X										X						
Fire Pit Brick																X								X										X						
RumbleStone®																																								X

X = Available in both Thick and Thin      0 = Available Thick Pavers ONLY      # = Supra only available in 60mm

The availability of colors in certain shapes may change. Minimum square footage requirements may apply. Please refer to our current Product Color Run Sheet on [www.flagstonepavers.com](http://www.flagstonepavers.com) before making your selections.

Due to expected variations of the natural raw materials used in the production of these products, minor shade variations may occur between samples including material samples, photography, printed images, computer images and orders. Please make your color selections from the actual samples. Check with your Flagstone representative for shapes and sizes available in solid and premium colors.



Traverstone in White / Tan / Charcoal, Random Pattern

**NOTICE OF LIMITED WARRANTY:** the terms of the Limited Warranty applicable to our products can be found at [www.flagstonepavers.com](http://www.flagstonepavers.com) or can be obtained by sending a written request to c/o FLAGSTONE PAVERS, 9070 Old Cobb Road, Brooksville, FL 34601.

---

Manufactured by:

**FLAGSTONE**  **PAVERS**  
QUALITY & STRENGTH INTERLOCKED

[www.flagstonepavers.com](http://www.flagstonepavers.com)

9070 Old Cobb Road  
Brooksville, FL 34601  
Phone: 352-799-7933  
Fax: 352-799-6844

©2018 The QUIKRETE Companies - Patents Pending. • KHS - 5/18

QUIKRETE and its subsidiaries (collectively QUIKRETE) reserve the right to improve its products and make changes to its specification and design without notice. The information contained herein has been compiled by QUIKRETE and to the best of its knowledge, accurately represents Flagstone Pavers products and how it may be used in the applications which are illustrated. Site conditions, including load pressures acting on the wall, soil types and drainage conditions, may vary. Final determination of the suitability of the product for the use contemplated and the manner of product use are the sole responsibility of the user. Good construction practices and local building codes require the use of an engineered design when constructing retaining walls or free-standing walls in many conditions. Structural design and analysis should be provided by a qualified engineer.